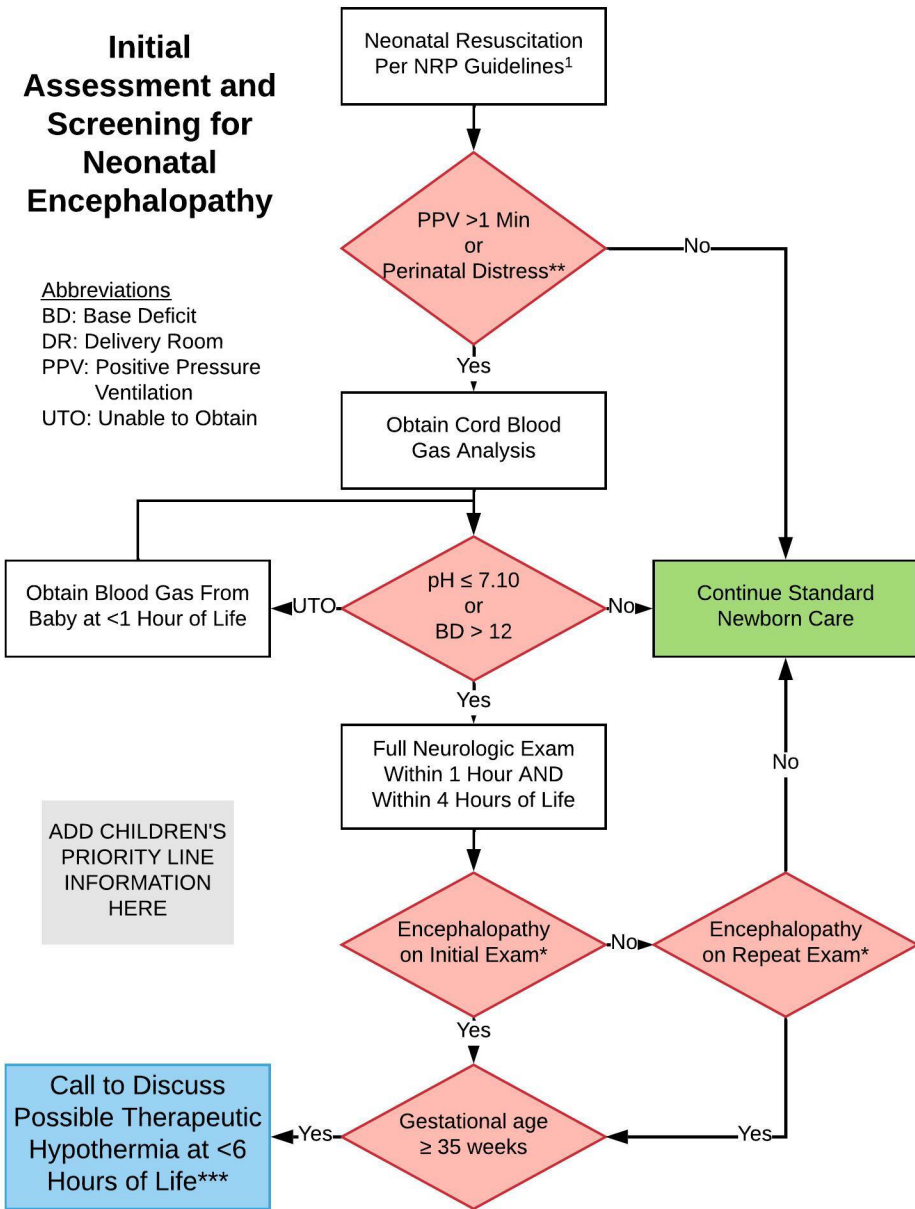


# Initial Assessment and Screening for Neonatal Encephalopathy

**Abbreviations**  
 BD: Base Deficit  
 DR: Delivery Room  
 PPV: Positive Pressure Ventilation  
 UTO: Unable to Obtain



ADD CHILDREN'S PRIORITY LINE INFORMATION HERE

**\*Physical Exam Findings of Neonatal Encephalopathy<sup>2</sup>**

Activity/Consciousness  
 Lethargic, obtunded, stupor, coma

Posture  
 Distal flexion (wrists/ankles)  
 Decerebrate

Tone  
 Hypotonia or hypertonia  
 Flaccid or rigid

Primitive Reflexes  
 Weak or absent suck  
 Incomplete or absent Moro

Autonomic Disturbance  
 Constricted, unequal, or fixed and dilated pupils  
 Bradycardia  
 Periodic breathing or apnea

Seizures  
 Most will be subclinical

**\*\*Examples of Perinatal Distress:**

- Non-reassuring fetal tracing
- Placental abruption
- Umbilical cord prolapse
- Shoulder dystocia
- Abnormal neuro exam in DR

**\*\*\*Notify neonatologist if any of the following relative contraindications to hypothermia exist<sup>3</sup>:**

- Life-Limiting Congenital Anomalies
- Severe Pulmonary Hypertension
- Severe Coagulopathy

**References**

1. *Textbook of Neonatal Resuscitation (NRP)*, 7th Ed. (2016)
2. Sarnat, H. B., & Sarnat, M. S. (1976). Neonatal encephalopathy following fetal distress. A clinical and electroencephalographic study. *Arch Neurol*, 33(10), 696-705.
3. Mosalli, R. (2012). Whole Body Cooling for Infants with Hypoxic-Ischemic Encephalopathy. *Journal of Clinical Neonatology*, 1(2), 101-106.