

# Strategies to Increase PREM Survey Completion

BE Webinar 11  
October 15, 2024



● NEBRASKA, WHERE A GREAT LIFE STARTS WITH HEALTHY MOMS AND HEALTHY BABIES. ●

1

## Agenda

- NPQIC Updates
- BE Data Corner
- Strategies to Increase PREM Survey Completion
- Guest Presenter: ILPQC
- Guest Presenter: Carol Gilbert, PhD, MPH
- Team Talk
- BE Next Steps

Please enter your name and the hospital team you are affiliated with in the chat!



2

## Monthly Webinar Topic Schedule

Title	Month
Integrating Doulas into the Care Team	May 2024
Postpartum Safety Patient Education	June 2024
Actionable Respectful Care Practices and PREM Implementation	August 2024
Achievable Patient/Community Engagement Strategies	September 2024
<b>Strategies to Increase PREM Survey Completion</b>	October 2024
All-cohort coaching call	November 2024



3

## NPQIC Updates



4

**Join US!**

**SAVE THE DATE**

**10th Annual NPQIC Summit**

Friday, September 12, 2025

UNO Scott Conference Center  
Omaha, NE

5

Implementation Strategies for Hospital Teams

1. Identify your hospital point of contact/education coordinator
2. This individual must complete the license agreement (1 per facility) and select an access option:  
<https://www.diversityscience.institute/npqic-information>

Two options exist for learners to access the e-module training:

1. Learners self-register using a code that Diversity Science will provide after you submit the license agreement. Your team is responsible for providing instructions to staff on how to access the e-module training directly as individuals. Learners provide you with their certificate of completion if you need documentation.  
<https://www.diversityscience.institute/npqic>
2. Your team provides Diversity Science with a list of learners by filling out a provided spreadsheet template. They will enroll them, send an email invite, and provide you with quarterly completion reports.

6

## Diversity Science Modules- Poll

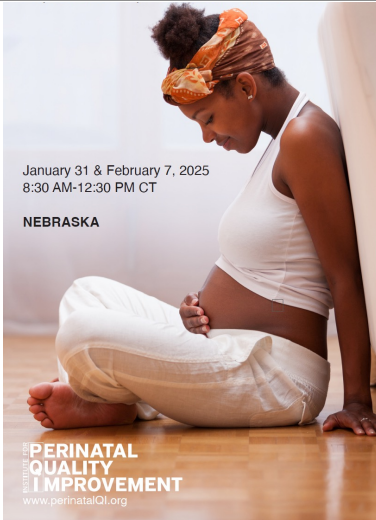
NPQIC's personalized website is finally ready!

1. Have you identified your hospital's point of contact/education coordinator?
2. Has your education coordinator logged into the website and completed license agreement?
3. Have you determined which method of tracking completions to use?
4. Have you started sharing log-in information with staff (if you chose pathway 1)?



7

## Education Opportunity



January 31 & February 7, 2025  
8:30 AM-12:30 PM CT

NEBRASKA

PERINATAL  
QUALITY  
IMPROVEMENT  
www.perinatalQI.org

# SPEAK UP Champion

## Implicit and Explicit Racial Bias Education

- Live, virtual 2-part series (private event)
- NPQIC will sponsor 2 individuals from every birthing facility to attend the training
- Value of \$350 per person
- For eligible nurses, 7.75 CNE contact hours are available on completion



8



Maternal Mortality & Morbidity Advocates

## Momma's Voices

Lived Experience Integration® into Quality Improvement

- 2-hour online self-paced training
- NPQIC will sponsor access to the training for 2 individuals from every birthing facility
- Value of \$297 per person



9

## QI Data Corner



10

## Key Strategy Implementation

Key Strategy	Baseline (2023)	September 2024*
Implement doula policy & doula friendly practices	0%	88%
Engage patients and community	14%	38%
Optimize race data collection process & review data	50%	100%
Implicit bias & respectful care training for clinical team/staff	14%	75%
Share respectful care practices & survey patients on care experience	0%	88%
Standardize Postpartum Education	75%	88%



11

## How are we doing on key strategy implementation?

- 1 teams has all key strategies in place
- 2 teams have 5/6 key strategies in place
- 2 teams have 4/6 key strategies in place
- 3 teams have fewer than 4 key strategies in place

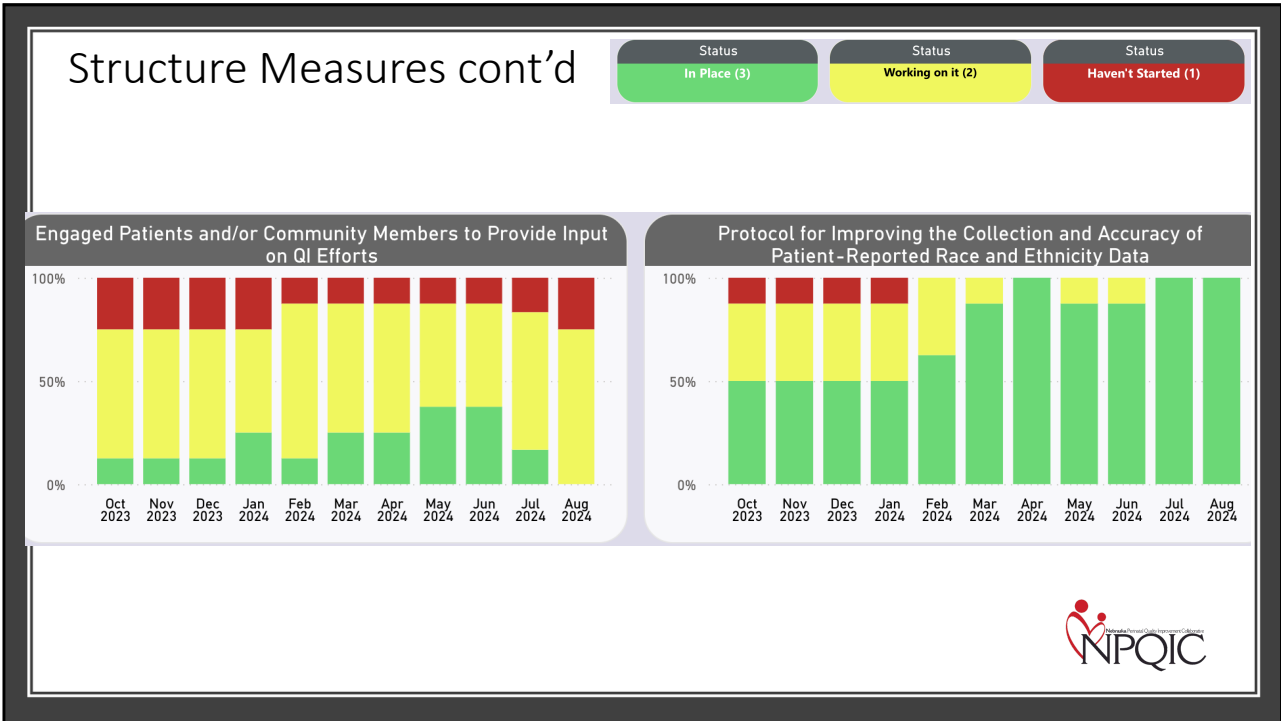
Goal: 75% of teams will have all strategies in place by Dec 2025



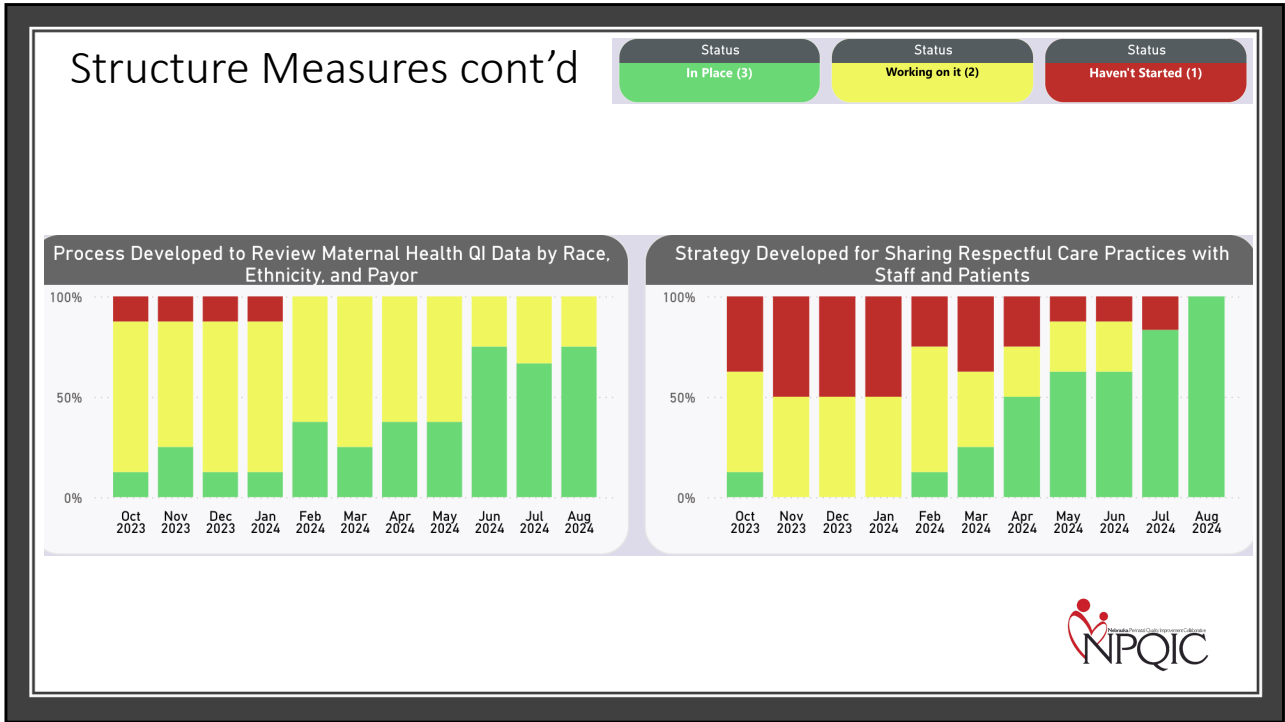
12



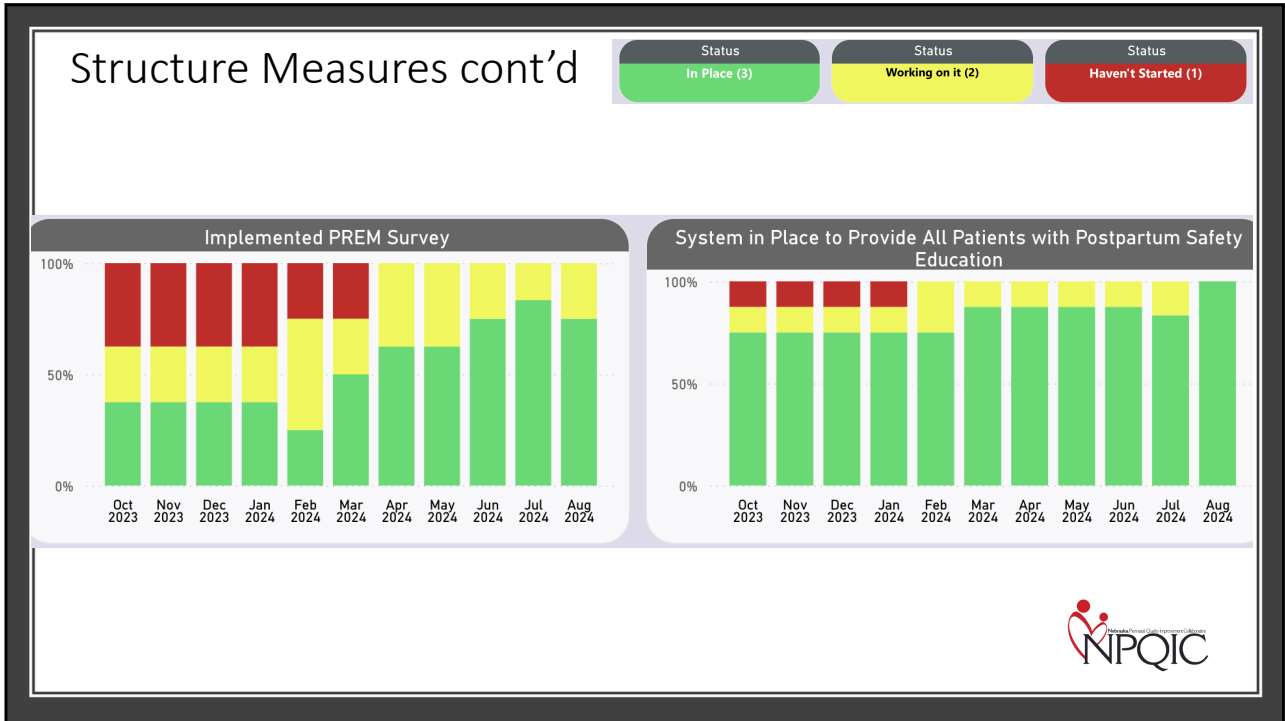
13



14

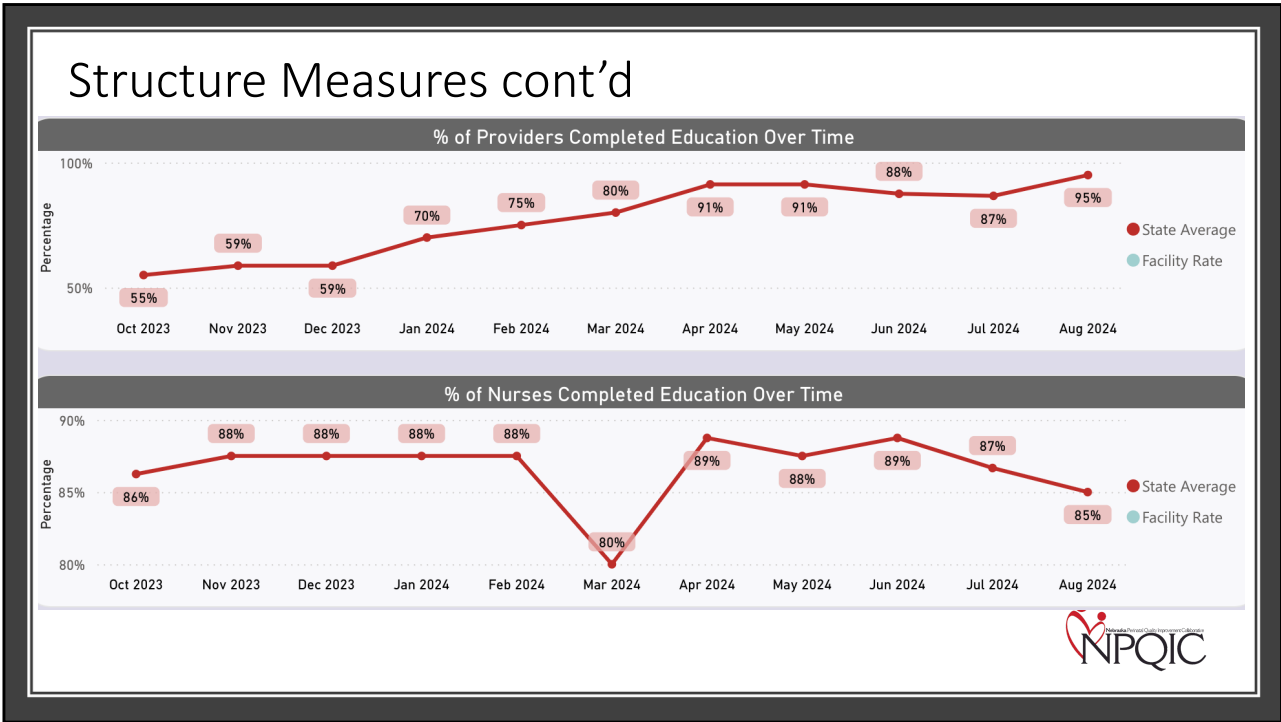


15

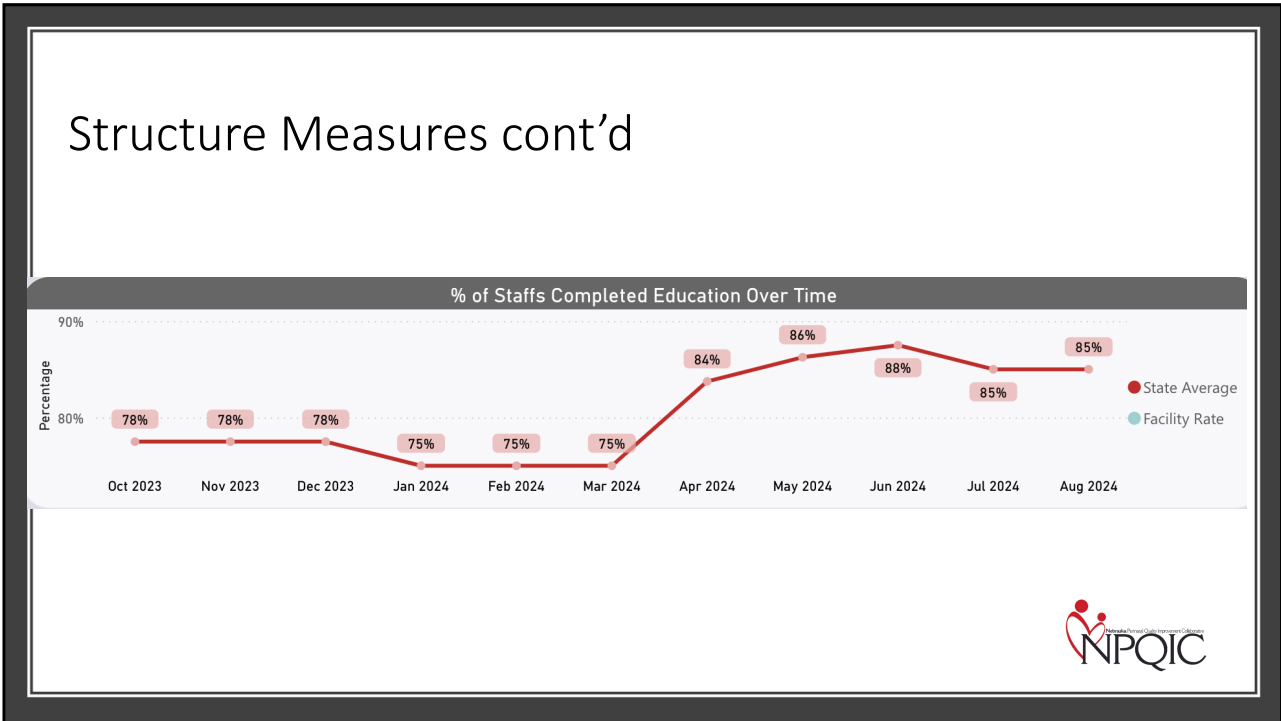


16





17



18

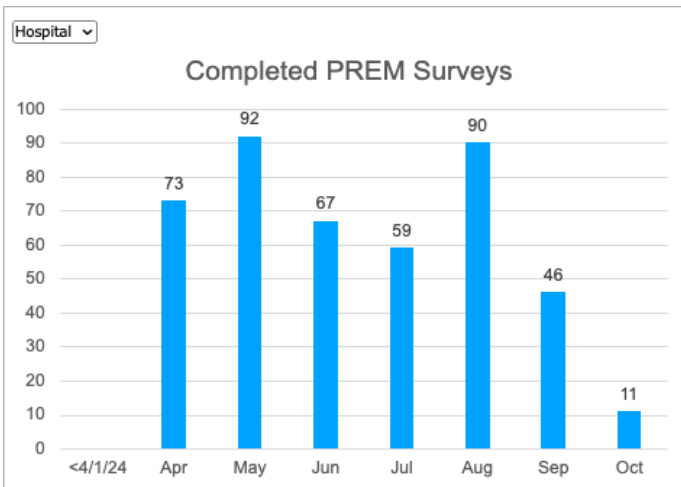
### BE Hospital Team Data Submission (8 teams total)

Month	# of Teams Reporting
January	8
February	8
March	8
April	8
May	8
June	8
July	7
August	6
September	2



19

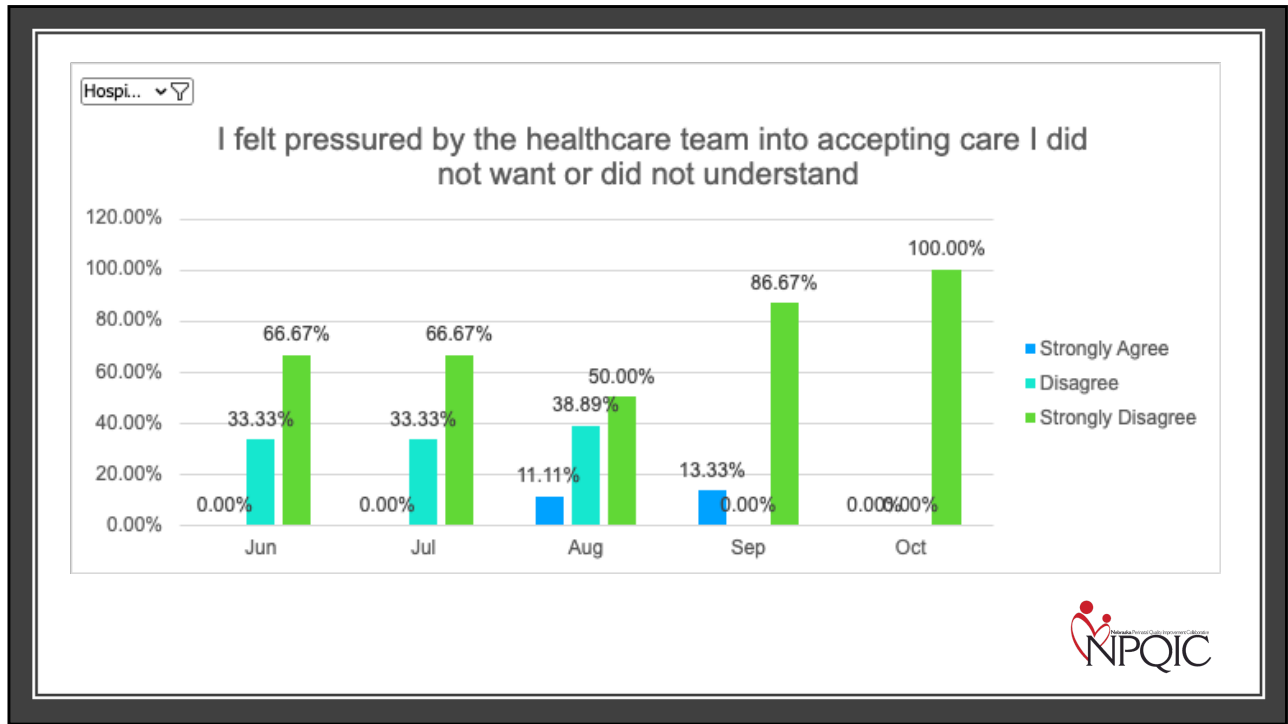
### PREM Survey Completions



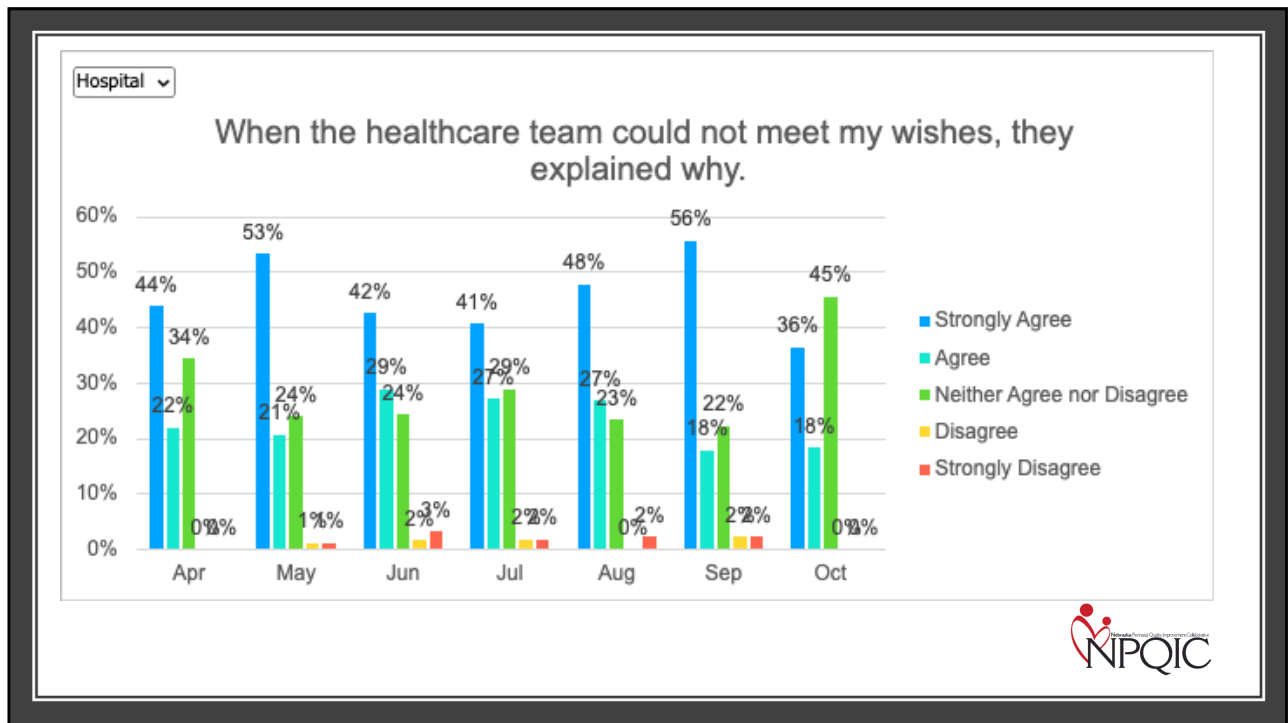
- Counts for those reporting range from 2 to 264
- *Aim for 30% completion rate for all monthly deliveries*



20



21



22

## Priority Strategies in Q4: *Moving to Culture Change*

Strategy	Actions
<b>PREM implementation</b>	<b>Fine tune the process flow, increase completion rate, review survey results, share with team, act on improvements</b>
Patient Engagement	Develop clear ask and compensation plan, Invite, Onboard, Engage regularly in QI work, Equip (Momma’s Voices training)
Implicit Bias Education	PQI Speak Up training, Diversity Science Modules, Momma’s Voices training



23

## Increasing PREM Survey Completion



24

## How to Actively Implement Respectful Care and PREM with your Clinical Teams

- Provide all providers and nurses a copy of the Respectful Care Practices to read and sign off to acknowledge they commit to these practices
- Discuss activation of Respectful Care Practices with clinical care teams: how do we “Commit to Sit,” active listening, shared decision making...
- Post Respectful Care Practices posters in patient-facing areas where patients can read them, such as admission area, triage, L&D rooms and postpartum



25

## How to Actively Implement Respectful Care and PREM with your Clinical Teams




- Create a process flow to:
  - Provide and review with all patients the expected Respectful Care Practices
  - Review Respectful Care Practices after delivery on postpartum
  - Ensure all patients receive PREM Survey QR code and are asked to anonymously complete the survey on their phone/device before discharge postpartum to share their feedback



26

# Strategies to Integrate PREM Survey into Hospital Workflow

- Post PREM Survey patient handout with QR code throughout OB unit and distribute to patients
  - Available on NQPIC website
  - Customize with your logo
- Utilize unit iPads
- Introduce PREM survey while patient has some downtime
  - During newborn hearing screening
  - Before discharge, while waiting for instructions



**Tell Us About Your Birthing Experience**

*The purpose of this Patient Reported Experience Measure (PREM) Survey is to give you an opportunity to share feedback on your labor and delivery and postpartum care.*


**Our goal is to provide respectful care for all patients and we need your feedback to make sure we are providing the care you need.**

- Your survey responses will be anonymous (your name is not linked to your answers) and the survey should only take a few minutes to complete.
- Use this Survey Access Code or Scan the QR code below to complete the PREM Survey, currently available in English and Spanish.
- Please complete the survey before you discharge. Let your nurse know when it is complete or if you have any issues. If you do not have a phone or other device available to take this survey, let your nurse know.


**Option 1: Enter the Survey Access Code**  
Start the survey by following the steps below.

- 1 Go to this web address: <https://unmcrcdcoop.unmc.edu/redcap/surveys/>
- 2 Then enter this code: **PRJ7KDYDC**

**Option 2: Scan the QR Code**  
Alternatively, if you have a device that has an app capable of reading QR codes, you may scan the QR code below, which should take you directly to the survey in a web browser.



**We are committed to providing you safe and respectful care.**  
Respectful care ensures that patients receive patient-centered care, feel respected and listened to, and the individual needs and preferences of all birthing people are valued and met.



Supporting respectful care for all patients. The Nebraska Perinatal Quality Improvement Collaborative (NPQIC) works with patients, physicians, midwives, nurses, hospitals, and community groups to reduce maternal disparities and promote birth equity by ensuring all patients receive safe, high-quality, compassionate, and respectful care.

27

# Engage your Clinical Team with PREM

- We need our clinical team members to be talking to patients about Respectful Care Practices to expect during delivery admission and that before discharge we will ask all patients to complete a survey to give us feedback on how we did providing respectful care!
- Nurses talking about the PREM survey on postpartum and asking patients to complete it before discharge will increase % completed – use the NPQIC PREM handout for nurses to provide to patients
- Track PREM survey completion rates over time
- Share results and completion rates with clinical team, and work on reaching your goals!




28

How to:  
**Share PREM Survey Data with Clinical Team Members**


- 1 Review PREM survey data with your Birth Equity team monthly.
- 2 Prepare a handout/slides of quarterly, yearly, or cumulative PREM survey results at your hospital.
- 3 Share the PREM survey results with OB clinical staff in break rooms, at change of shift, and at OB provider/staff meetings.
- 4 Determine focus areas to actively implement Respectful Care Practices on your unit: Which key elements will you work on?
- 5 Engage clinical team members in a plan of action, such as commit to sit, shared decision making, review of respectful care practices.

How are you sharing PREM survey data with your team?

[Access on our website here](#)




GOAL is to improve **RESPECTFUL CARE!**  
Host a Respectful Care Breakfast or meet & greet and identify a patient partner for input on improving respectful care for **ALL** birthing patients.



29

Guest Presenter:  
Aleena Surenian, ILPQC



30

## Illinois Perinatal Quality Collaborative (ILPQC) Birth Equity (BE) Initiative

PREM Implementation Strategies

October 15, 2024





31

## Illinois Perinatal Quality Collaborative (ILPQC)

---

Statewide network of hospital teams, perinatal clinicians, patients, community partners, and public health leaders.


**Committed to equitably improving outcomes and reducing disparities for birthing people and newborns in Illinois.**



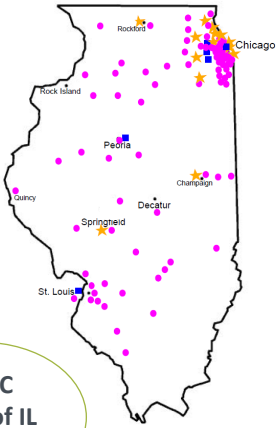
32



## Illinois Perinatal Quality Collaborative (ILPQC)



- In July 2021 ILPQC began a statewide Birth Equity Initiative across 86 hospitals
  - Currently, 74 hospitals participating due to closures & participation dropoff
- Developed with ongoing partnership with patients and community groups
- Informed by national guidelines and other PQCs



ILPQC  
>99% of IL  
births

Illinois Perinatal Quality Collaborative 33


33

## Birth Equity Key Strategies


### Birth Equity Initiative Aim

---


By June 2024, ≥  
70% of  
participating  
hospitals will have  
implemented all  
key strategies




Optimize race and ethnicity data collection and review stratified data




Screen all patients for social determinants of health and link to needed services




Standardize postpartum safety education and schedule early postpartum visit



Engage patients and community members for quality improvement input



Implicit bias & respectful care training for providers, nurses, other staff



Share respectful care practices and survey patients on their care experience

Illinois Perinatal Quality Collaborative 34

34

# ILPQC Hospital Team Data Submission



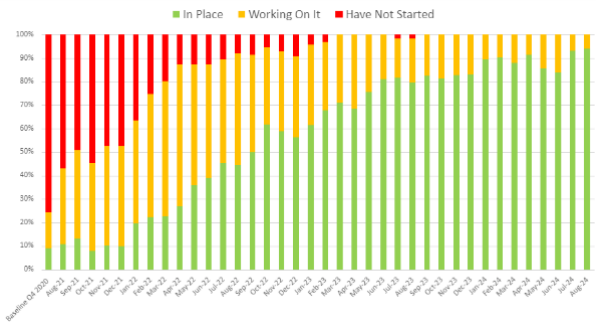
Structure Measures	Baseline (% In Place)	August 2024 (% In Place)
SDOH Screening (L&D)	17%	100%
Optimize Accurate Self-Reported Race and Ethnicity Data Collection	7%	100%
Review Maternal QI Data Stratified by Race, Ethnicity & Insurance	6%	98%
Engage Patients and Community in QI Work	4%	72%
Sharing Respectful Care Strategies with Healthcare Team and Patients	9%	94%
PREM Implementation	9%	94%
Postpartum Safety Patient Education	54%	98%

35

## Sharing Respectful Care Strategies with Healthcare Team and Patients

9% --> 94%

FREE AWHONN Resource for each BE team



**QI Strategy: Healthcare team sign Respectful Care Commitment & share respectful care practices with patients, promote active implementation of respectful care**

Illinois Perinatal Quality Collaborative

**Respectful Maternity Care Framework and Evidence-Based Clinical Practice Guideline**

**Promoting Safe and Respectful Maternity Care for All Patients**

Our Commitment to You

**What does it mean to give and receive respectful care during labor and delivery?**

Maternal near-term (through 18 weeks) and during labor and delivery (through 42 weeks) care is health care. All care should be respectful and evidence-based. We are committed to providing you with the highest quality of care, and we are committed to listening to your voice and your needs.

**We believe that respectful care is an essential component of what is taken for all patients to thrive.**

**Supporting respectful care for all patients.**

The Illinois Perinatal Quality Collaborative (ILPQC) works with perinatal quality measures across hospitals and community groups to reduce maternal, fetal, and newborn morbidity and mortality. We are committed to providing you with the highest quality of care and support.

**Here are our respectful care commitments to every patient**

We commit to...

1. Treating you with dignity and respect throughout your pregnancy.
2. Informing you of your options and your preferences regarding your care.
3. Learning your goals for delivery and postpartum. What is important to you for labor and delivery? What are your concerns regarding your health and your baby's health? We will support your choices.
4. Working to understand your needs, including your need for and your health care preferences, and your preferences for care you would like during your delivery.
5. Communicating effectively so your needs and preferences are heard.
6. Partnering with you for all decisions so that you can take the choices that are right for you.
7. Practicing "active listening" so you know that you are being heard.
8. Making personal boundaries and respecting your agency and autonomy at all times, including asking you to provide consent for any and all procedures.
9. Recognizing your prior experience with healthcare and that there are people that during your life, but all of them are all there to provide safe, high-quality and respectful care.
10. Making sure you are discharged after delivery with an understanding of postpartum recovery, symptoms, and when to seek help.
11. Ensuring you are discharged with the skills, support and resources you need for yourself and your baby.
12. Protecting your privacy and keeping your information confidential and shared.
13. Being ready to hear any concerns or requests that you may have during your care.

36

## Promote Respectful Care Practices



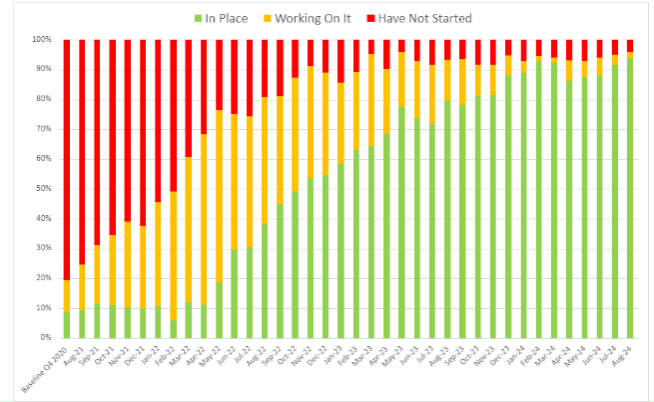
1. **Treating you with dignity and respect** throughout your hospital stay
2. **Introducing ourselves and our role** on your care team to you and your support persons upon entering the room
3. **Learning your goals for delivery and postpartum:** What is important to you for labor and birth? What are your concerns regarding your birth experience? How can we best support you?
4. **Working to understand you,** your background, your home life, and your health history so we can make sure you receive the care you need during your birth and recovery.
5. **Communicating effectively** across your health care team to ensure the best care for you
6. **Partnering with you for all decisions** so that you can make choices that are right for you
7. **Practicing “active listening”**—to ensure that you, and your support persons are heard
8. **Valuing personal boundaries and respecting your dignity and modesty at all times,** including asking your permission before entering a room or touching you
9. **Recognizing your prior experiences with healthcare may affect how you feel during your birth,** we will strive at all times to provide safe, equitable and respectful care
10. **Making sure you are discharged after delivery with an understanding of postpartum warning signs,** where to call with concerns, and with postpartum follow-up care visits arranged
11. **Ensuring you are discharged with the skills, support and resources** to care for yourself and your baby
12. **Protecting your privacy** and keeping your medical information confidential
13. **Being ready to hear any concerns** or ways that we can improve your care



37

## PREM Survey Implementation

### 9% --> 94%



**Key strategies to have in place:**

- **Post PREM Survey flyers with QR Codes in each patient room**
- **Have a process flow to ask patients to complete the PREM survey before discharge to increase % completion**
- **Review PREM survey responses in REDCap and share data with your hospital team**

### Tell us About Your Birthing Experience!


**The purpose of this PREM survey is to give you an opportunity to share feedback on your labor and delivery and postpartum care.**

Our goal is to provide respectful care for all patients and we need your feedback to make sure we are providing the care you need.


- Your survey responses will be anonymous (your name is not linked to your answers) and the survey should only take you a few minutes to complete.
- Choose your preferred language and scan the QR Code below to complete the PREM Survey.
- Please complete the survey before discharge. Let your nurse know when it is completed or if you have any issues. If you do not have a phone or other device available to take the survey, let your nurse know.

We are committed to providing you safe and respectful care.

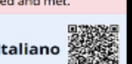
Respectful care ensures that patients receive patient-centered care, feel respected and listened to, and the individual needs and preferences of all birthing people are valued and met.




English




Español




Italiano



Русский




Polski



Français


Supporting respectful care for all patients: The Illinois Perinatal Quality Collaborative (ILPQC) works with patients, physicians, midwives, nurses, hospitals, and community groups across Illinois to reduce maternal disparities and promote birth equity by ensuring all patients receive safe, high-quality compassionate, and respectful care.


38



**Tell us about your care**

Scan the QR code or enter the following link: [https://www.ilpqc.org/patient-survey](#)





**ILPQC**  
Illinois Perinatal Quality Collaborative

**Our Respectful Care Commitments to Every Patient**

- Treating you with dignity and respect throughout your hospital stay
- Introducing ourselves and our role on your care team to you and your support persons upon entering the room
- Learning your goals for delivery and postpartum. What is important to you for labor and birth? What are your concerns regarding your birth experience? How can we best support you?
- Working to understand you, your background, your home life, and your health history so we can make sure you receive the care you need during your birth and recovery
- Communicating effectively across your health care team to ensure the best care for you
- Partnering with you for all decisions so that you can make choices that are right for you
- Practicing "active listening"—to ensure that you, and your support persons are heard
- Valuing personal boundaries and respecting your dignity and modesty at all times, including asking your permission before entering a room or touching you
- Recognizing your prior experiences with healthcare may affect how you feel during your birth, we will strive at all times to provide safe, equitable and respectful care
- Making sure you are discharged after delivery with an understanding of postpartum warning signs, where to call with concerns, and with postpartum follow-up care visits arranged
- Ensuring you are discharged with the skills, support and resources to care for yourself and your baby
- Protecting your privacy and keeping your medical information confidential
- Being ready to hear any concerns or ways that we can improve your care

**Labor & Delivery**

**PREM** ↔ **Respectful Care Practices**

1. I could take part in decisions about my care.

2. I could ask questions about my care.

3. My health care team did a good job listening to me. I felt heard.

4. My health care choices were respected by the health care team.

5. My health care team understood my background, home life and health history, and communicated well with each other.

6. My health care team introduced themselves to me, and my support persons, and explained their role in my care when they entered my room.

7. The health care team asked for my permission before carrying out exams and treatments.

39

## PREM Survey Completion

### Goal >10% of births

**12,736 PREM surveys**

**76 hospitals**

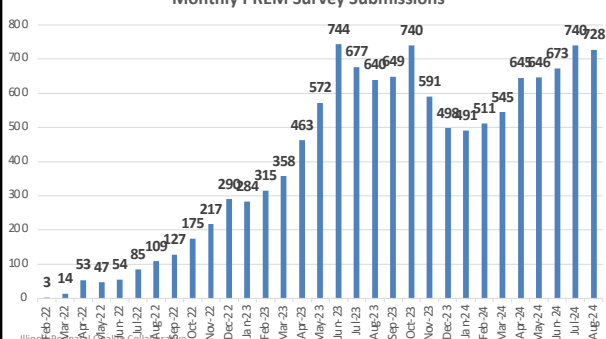
20% Black, 19% Hispanic, 5% Asian, 49% White

### Improving Respectful Care

**Reducing Black/White Disparity Gap**  
But must work to eliminate

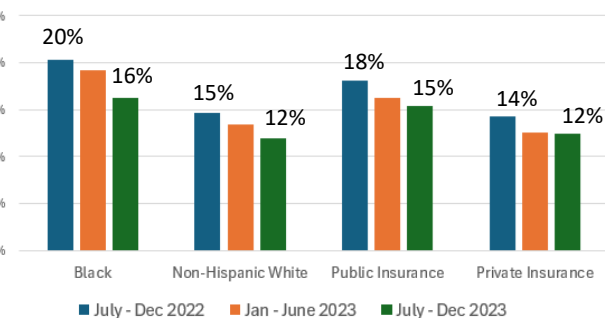
Continue to engage in active listening & shared decision making to eliminate disparities

#### Monthly PREM Survey Submissions



Month	Submissions
Feb-22	3
Mar-22	14
Apr-22	53
May-22	47
Jun-22	54
Jul-22	85
Aug-22	109
Sep-22	127
Oct-22	175
Nov-22	217
Dec-22	290
Jan-23	284
Feb-23	315
Mar-23	358
Apr-23	463
May-23	572
Jun-23	744
Jul-23	677
Aug-23	646
Sep-23	649
Oct-23	740
Nov-23	591
Dec-23	498
Jan-24	511
Feb-24	545
Mar-24	645
Apr-24	546
May-24	673
Jun-24	749
Jul-24	728
Aug-24	749

#### Patients reporting Agree/Neutral to the statement "I felt pressured by the health care team into accepting care I did not want or did not understand"



Group	July - Dec 2022	Jan - June 2023	July - Dec 2023
Black	20%	16%	16%
Non-Hispanic White	15%	12%	12%
Public Insurance	18%	15%	15%
Private Insurance	14%	12%	12%

40

## Strategies to increase the % of patients completing the PREM Survey before discharge

**IL PQC**  
Illinois Perinatal Quality Collaborative

**2023 Teams Survey**

- Enlist Birth Certificate Clerk to remind patients to complete survey
- Discharge Nurse discusses and follows up with patient
- Pair PREM with Edinburgh PP Depression survey
- Hang QR code in all postpartum rooms
- Reward staff for asking patients to complete
- Place in every patient's admission folder
- Offer an electronic device to complete survey on if they do not have one

Illinois Perinatal Quality Collaborative 41

41

## Additional strategies to encourage PREM completion - 2024 Teams Survey

-  **HAVING THE SURVEY ON AN IPAD**
-  **POSTING A QR CODE TO THE SURVEY IN EVERY PATIENT ROOM**
-  **REMINDING PATIENTS TO COMPLETE IT DURING LEADERSHIP ROUNDS**
-  **GIVING PATIENTS SMALL THANK-YOU GIFTS OR REWARDS**
-  **OFFERING THE SURVEY AT WEEKLY PATIENT SUPPORT GROUP**
-  **INTEGRATING REMINDERS VIA PHONE CALLS AND TEXT MESSAGES**

42

## ILPQC resources to encourage sharing PREM data with clinical team members and taking action

- Review PREM survey reports and track % completed PREM
- Share PREM survey results with clinical staff
- Identify Respectful Care Practices to work on with your unit
- Take action and monitor for improvement

**Utilizing PREM REDCap Reports to Actively Implement Respectful Care for Every Patient, Every Time**

**Steps to access PREM REDCap Reports to share with your clinical team**

1. Log into REDCap and select the PREM - English Project
2. Click on the "Reports" tab under Project Bookmarks
3. Enter your Hospital ID and click "Go"

**Steps to use PREM Survey Reports to interpret patient-reported data and highlight Respectful Care Practices opportunities for improvement at your hospital**

4. Click through Reports 1-14 to view single question reports, stratify by race, ethnicity & insurance to identify disparities AND view by month, quarter, 6-months & year
5. Click on Report 15 to view PREM survey completion rate and race, ethnicity and insurance distribution
6. Click on Report 16 to review summary data for each PREM survey measure and identify statements a demographic groups reporting the most opportunities for improvement for Respectful Care Practices

Month/Quarter/Year	PREM Responses	2021	2022	2023	2024	Total Count
NTSV C-section		540	500	500	500	
Other		570	530	530	530	
Prevalent not to report		30	30	30	30	
<b>Grand Total</b>		<b>1170</b>	<b>1060</b>	<b>1060</b>	<b>1060</b>	

**Share PREM Survey Data with Clinical Team Members and Take Action**

- Access REDCap and review PREM survey reports including completion rate (report #15) with your Birth Equity team monthly. *Achieve goal >10% of deliveries or > 15 PREM surveys per month*
- Download and print REDCap reports (including #16 for a summary).
- Share PREM survey results with OB clinical staff in break rooms, change of shift, OB provider meetings.
- Identify Respectful Care Practices to actively work on with your unit using Report #16.
- Review Respectful Care Practices with clinical teams and take action, such as: commit to sit, shared decision making, active listening, introductions to patient/family on room entry, and monitor for improvement.

**Improving respectful care requires shared decision making and active listening**  
 Recognize patients as the experts of their own experience  
 Empower patients to make choices through accessible, nonjudgmental communication

43

## BE Sustainability Goals:

*Building the infrastructure to sustain Birth Equity*

<b>Patient &amp; Community Engagement</b>	<b>Social Determinants of Health Linkage</b>	<b>PREM Survey Completion</b>	<b>Data Analysis</b>
<ul style="list-style-type: none"> <li>• Host Respectful Care Breakfasts</li> <li>• Engage a Patient Partner on your QI team</li> </ul>	<ul style="list-style-type: none"> <li>• Build relationships with community partners to improve patient linkage, such as Community-based Doulas and Home Visiting Programs</li> <li>• Expand strategies to outpatient sites</li> </ul>	<ul style="list-style-type: none"> <li>• Increase PREM survey completion &gt; 10% or 15 surveys per month to obtain patient feedback</li> <li>• Utilize feedback to continue to improve respectful care</li> </ul>	<ul style="list-style-type: none"> <li>• Stratify NTSV C-section &amp; PREM data by race, ethnicity and insurance</li> <li>• Take action on disparities</li> </ul>

44

# Using PREM Survey Data for QI: Carol Gilbert, PhD, MPH



45

## CONFIDENTIALITY

- You see this data with only your own hospital identified
- No other hospitals can identify your hospital in the data
- The data is for your use.
- NPQIC can use it for planning, training, etc.

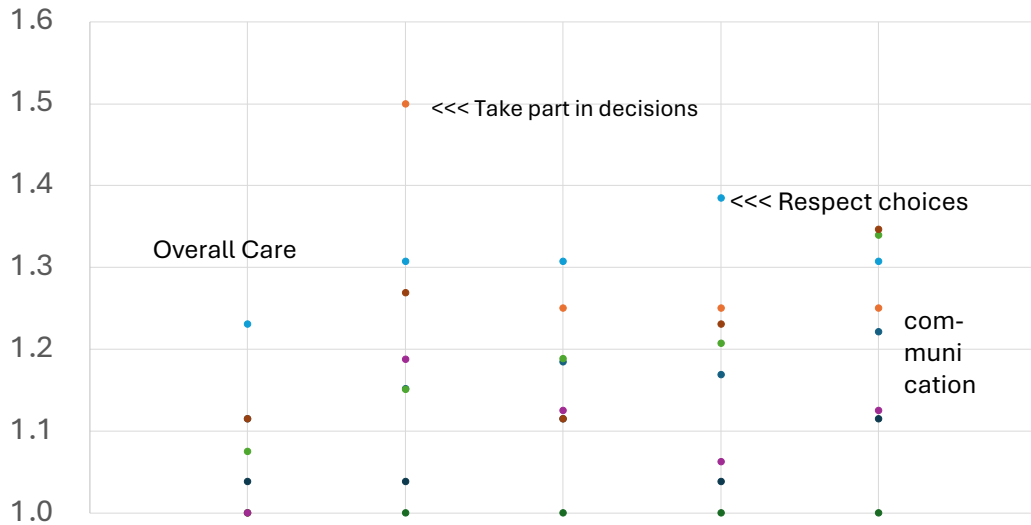
46

## Ways to use the data

- You can compare your scores with the other unidentified hospitals' scores (aggregate)
- You can compare your scores over time
- You can compare your scores across demographic groups
  - Age, race, insurance, gender identity, sexual orientation, language
- You can see how some scores relate to other scores
- Completion rate matters!

47

Uses: Identifying outliers (1 is best)



48



## Who affects people's overall opinion of care

Category (Chi-square statistic)

- Nurses (507)
- Obs and Midwives (431)
- Other staff (297)

49

## Use of doulas

- 24 (6%) of births had doula services during the pregnancy
- 18 (5%) had a doula present at L&D
- 63% of those who had doula services during this pregnancy were non-white

50

# Representativeness

	2023 State Births	2024 PREMS Respondents
Hispanic or Latino	22%	13%
American Indian or Alaska Native	2%	2%
Asian	3%	3%
Black or African American	7%	11%
Native Hawaiian/Pacific Islander	0%	1%
White	84%	78%
More than one race	3%	3%

To track representativeness better, we need birth demographics by hospital


51

# Team Talk



52

# BE Next Steps



53

Preparation	Getting Started	Early Implementation	Throughout Year 1	Year 2
Meet with colleagues to establish buy-in and determine co-leads	Schedule regular meetings with team to review data and PDSAs and make improvements	Work with IT and data team to make system changes	Establish stakeholder group including doulas and patients	Continue reviewing PDSAs
Complete participation agreement	Attend the data call	Collect baseline data (Jan, Feb, March 2024)	Implement strategy for sharing REC practices in L&D	Continue reviewing PREM data
Complete Readiness Survey (Microsoft Forms)	Attend Kickoff Call	Create a draft 30-60-90 day plan	Implement doula-friendly policies	Continue reviewing equity data
Review your hospital's data and identify opportunities for improvement	Review Data Collection Form with your team; identify needed systems changes in order to collect equity variables	Plan first PDSA cycle to address 30-60-90 day plan	Standardize system for sharing urgent maternal warning signs	Additional equity trainings for providers (film screening, modules, etc)
	Review Birth Equity Toolkit	Schedule kickoff meeting/grand rounds	Implement implicit bias training	Continue meeting with provider/ doula/ patient group
		Create plan for implicit bias training	Implement PREM survey and regularly review PREM data	

54

## What Will Year 2 of Birth Equity Look Like?



- NPQIC will continue monthly webinars on the same cadence for the second cohort of teams
- Cohort 1 teams are welcome to join monthly calls for a refresher on the content! Invite new team members to join calls.
- We will organize 2-3 grouped coaching calls where Omaha and Lincoln teams will mentor Cohort 2 teams and exchange knowledge
- Continue working toward key strategy implementation
- Potential in-person meeting in conjunction with 2025 Summit!



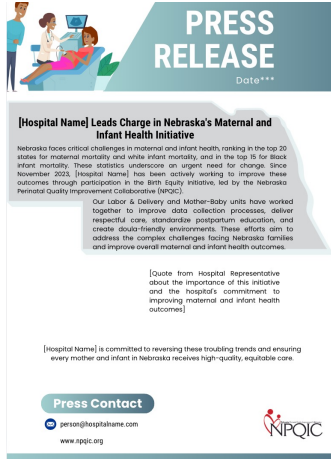
55

## Birth Equity Timeline- Next 3 months

October	November	December
<p><b>Monthly Webinar: Strategies to Increase PREM completion</b>  <b>Oct 15, 2024, 12-1pm</b></p> <p>Office Hours  <i>October 18, 12-1pm</i></p> <p>Oct Data Due by Nov 15</p>	<p><b>Monthly Webinar: All-Teams Coaching Call</b>  <b>Nov 19, 2024, 12-1pm</b></p> <p>Office Hours  <i>November 15, 12-1pm</i></p> <p>Nov Data Due by Dec 15</p>	<p><b>Option to join Wave 2 Monthly Webinar: Data Collection Methods</b>  <b>Dec 17, 2024, 12-1pm</b></p> <p>Office Hours                      December 20, 2024</p> <p>Dec Data Due by Jan 15</p>

56

# Press Release Template Now Available!



- Press Release Template now available!
- As we approach 1 year in the project, this is a great time to highlight your work!



57

# BY NEXT TUESDAY

- Drop in the chat or say out loud one thing your team is committed to accomplishing by next Tuesday.
- Ideas:
  - Grow your BE team
  - Implement implicit bias training (Diversity Science modules!)
  - Take pictures of RCP implementation
  - Engage patient/doula partners
  - PDSA to increase PREM response rate



58