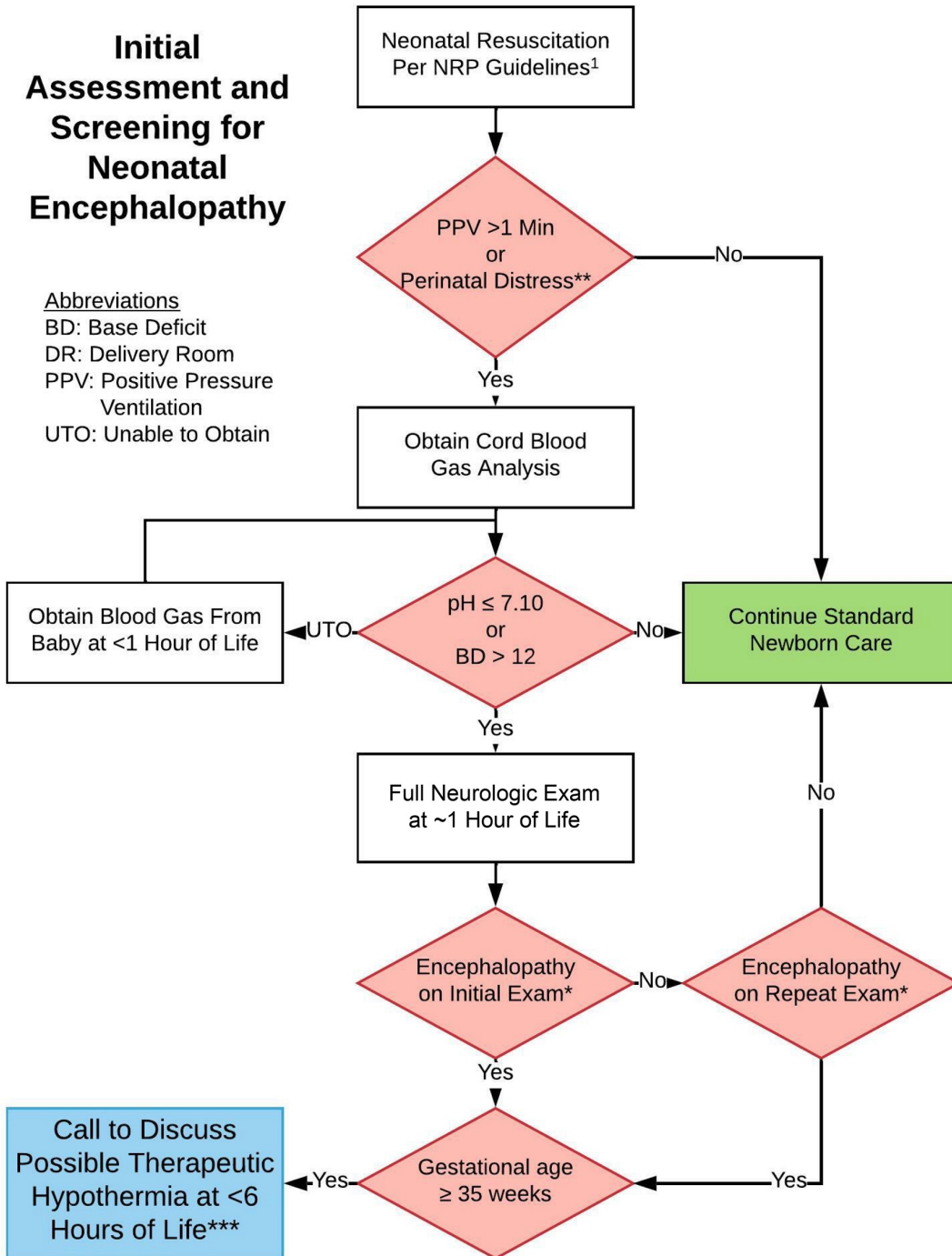


Initial Assessment and Screening for Neonatal Encephalopathy

Abbreviations

BD: Base Deficit
 DR: Delivery Room
 PPV: Positive Pressure Ventilation
 UTO: Unable to Obtain



*Physical Exam Findings of Neonatal Encephalopathy²

Level of Consciousness

Lethargic, obtunded, stupor, coma

Posture

Distal flexion (fingers/toes)
 Decerebrate

Tone

Hypotonia (focal or general)
 Flaccid

Primitive Reflexes

Weak or absent suck
 Incomplete or absent Moro

Autonomic Disturbance

Constricted, unequal, or fixed and dilated pupils
 Bradycardia
 Periodic breathing or apnea

Seizures

Most will be subclinical

**Examples of Perinatal Distress:

Non-reassuring fetal tracing
 Placental abruption
 Umbilical cord prolapse
 Shoulder dystocia
 Abnormal neuro exam in DR

***Notify neonatologist if any of the following relative contraindications to hypothermia exist³:

Life-Limiting Congenital Anomalies
 Severe Pulmonary Hypertension
 Severe Coagulopathy

References

1. *Textbook of Neonatal Resuscitation (NRP)*, 8th Ed. (2021)
2. Sarnat, H. B., & Sarnat, M. S. (1976). Neonatal encephalopathy following fetal distress. A clinical and electroencephalographic study. *Arch Neurol*, 33(10), 696-705.
3. Mosalli, R. (2012). Whole Body Cooling for Infants with Hypoxic-Ischemic Encephalopathy. *Journal of Clinical Neonatology*, 1(2), 101-106.